



STUDY ABROAD 101



INTRODUCTION TO STUDY ABROAD

- **3 types of study abroad options offered at SHSU**
 - Exchange: exchange with a student outside of the country through one of our partner universities
 - Faculty-led: enroll in an SHSU course and travel with your SHSU professor and class for 1-4 weeks in the summer or winter
 - Affiliated/Non-Affiliated: study abroad through a third-party provider
 - National Student Exchange (NSE): exchange with a student within U.S and Canada
- **More info found here: [Study Abroad Programs](#)**



DIFFERENCES

	Exchange Programs	Faculty-led Programs	Affiliated Programs	NSE
Tuition Costs	SHSU tuition	SHSU tuition + program fees	Program's tuition	SHSU tuition + related fees
Financial Aid	Applies (verify with Financial Aid)	Applies (verify with Financial Aid)	Applies (verify with Financial Aid)	Applies (verify with Financial Aid)
Course Registration	Courses transfer back to SHSU	Registered as SHSU course	Courses transfer back to SHSU	Courses transfer back to SHSU
Application Process	Exchange + SHSU Study Abroad application	Only SHSU Study Abroad application	Program + SHSU Study Abroad application	NSE + SHSU Study Abroad application

COST BREAKDOWN

	Tuition	Housing	Financial Aid	SHSU Fees	Additional Costs
Exchange Programs	SHSU tuition under full-time status + related fees	Separate	Based on award	Study Abroad fee, insurance fee	flights, meals, visa (if applicable), personal costs
Faculty-led Programs	SHSU tuition for course + related fees	Included	Based on award	Program fee, Study Abroad fee, insurance fee	flights, meals, visa (if applicable), personal costs
Affiliated Programs	Program's tuition	Separate	Based on award	Study Abroad fee, insurance fee	flights, meals, visa (if applicable), personal costs
NSE	SHSU tuition + related fees	Separate	Based on award	Study Abroad fee, insurance fee	flights, meals, visa (if applicable), personal costs

INTRO TO THE APPLICATION PROCESS (EXCHANGE & AFFILIATED)



- All students must complete two sets of applications:
 - **Bearkat Abroad Portal**
 - Only one application is required - apply to your #1 choice program
 - Free to apply
 - Access the portal here: [Bearkat Abroad Portal](#)
 - Available programs: [Study Abroad Programs](#)
 - Non-affiliated programs (not listed) are also allowed but have additional conditions

INTRO TO THE APPLICATION PROCESS (EXCHANGE & AFFILIATED)

- **Application of your program(s)**
 - You can apply to multiple programs when deciding but once you've selected your #1 choice program, inform the Study Abroad Office
 - Application requirements vary by program:
 - Some may have their own application fees
 - **If your program requires approval, email requests to studyabroad@shsu.edu**



INTRO TO THE APPLICATION PROCESS (FACULTY-LED PROGRAMS)

- All students must complete the application through the [Bearkat Abroad Portal](#)
 - Only one application is required
 - Free to apply
 - Consult with the faculty-led professor for additional details



STUDY ABROAD APPLICATION THROUGH THE BEARKAT ABROAD PORTAL

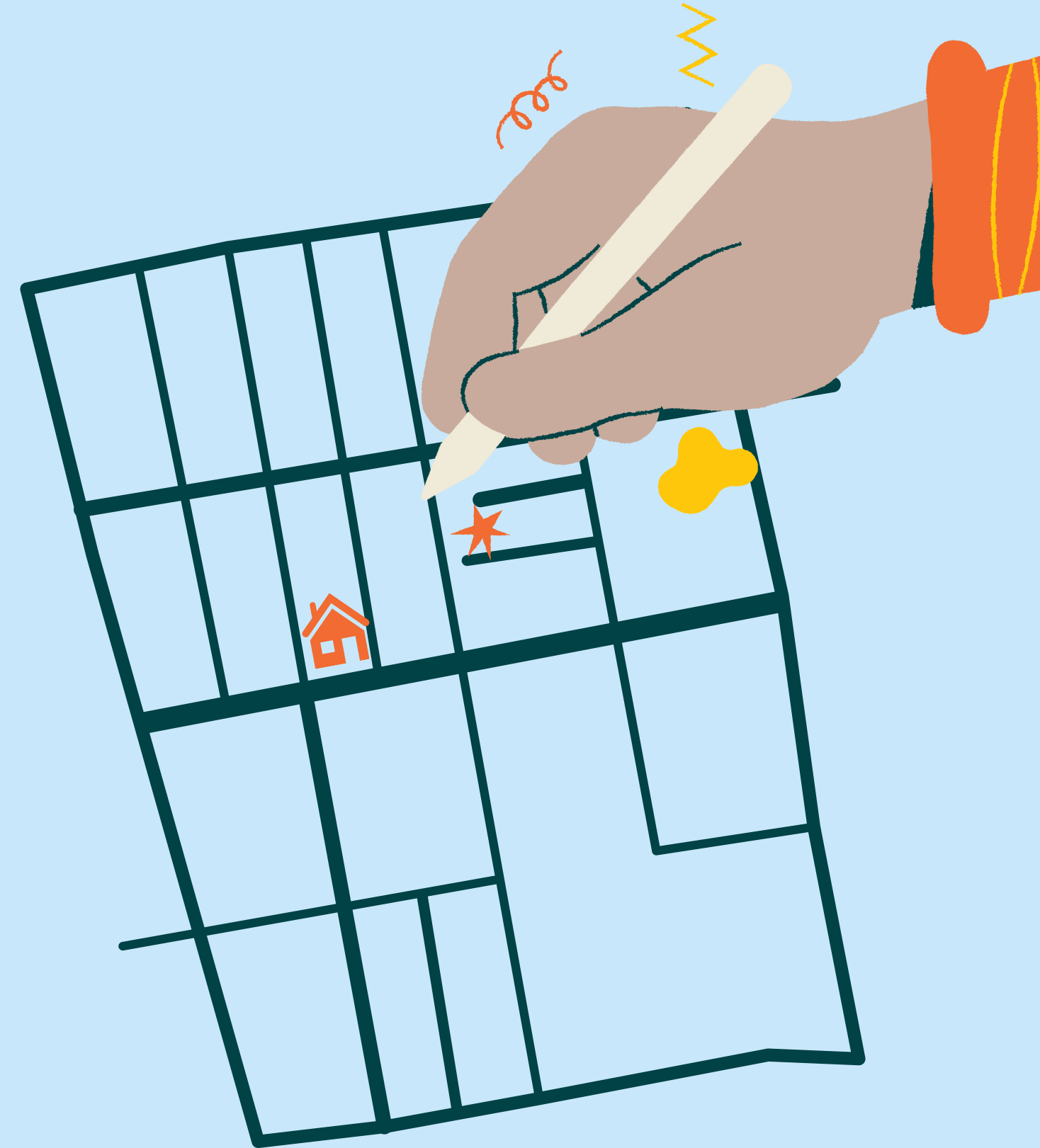
- **Application is divided into 2 stages:**
 - **Pre-Decision (Before Approval)**
 - Describe your experience and goals for studying abroad
 - Attend a Study Money Management Appointment
 - Verify faculty-led approval (for faculty-led trips) & judicial standing
 - Submit your unofficial transcript
 - Sign financial responsibility agreements
 - Deadlines:
 - Fall and Academic Year: March 15
 - Spring and Summer: October 15



STUDY ABROAD APPLICATION THROUGH THE BEARKAT ABROAD PORTAL

- **Post-Decision (after approval)**

- Sign all required forms on Bearkat Abroad Portal
- Submit Consortium Agreement Form
- Complete Course Pre-Approval Form
- Provide contact information and emergency contact
- Submit flight information
- Upload passport and student visa
- Complete Pre-Health Travel Survey



STUDY ABROAD APPLICATION THROUGH THE BEARKAT ABROAD PORTAL

- Specific forms may vary depending on type of program
- Some tasks are urgent and impact financial aid, credit transfer and other important factors related to your plans to study abroad
- Deadline: before departure



YOUR STUDENT ACCOUNT

- The following items will be charged to your account:
 - Study Abroad fee
 - SHSU travel insurance fee
 - SHSU tuition and related fees (only for Exchange and Faculty-led)
 - Program fee (only for Faculty-led)



ADDITIONAL INFORMATION

- Additional fees will not be on your Student Account and must be paid directly to the program or independently
 - May include:
 - Application fees &/or deposits required by your program
 - Flights and transportation to and from your destination
 - Visa & passport costs (including renewal if needed)
 - Insurance required by your program
 - Books and supplies
 - Personal expenses
 - Other fees itemized by your program
 - If you receive an invoice from your program, you must pay it directly to the third-party provider



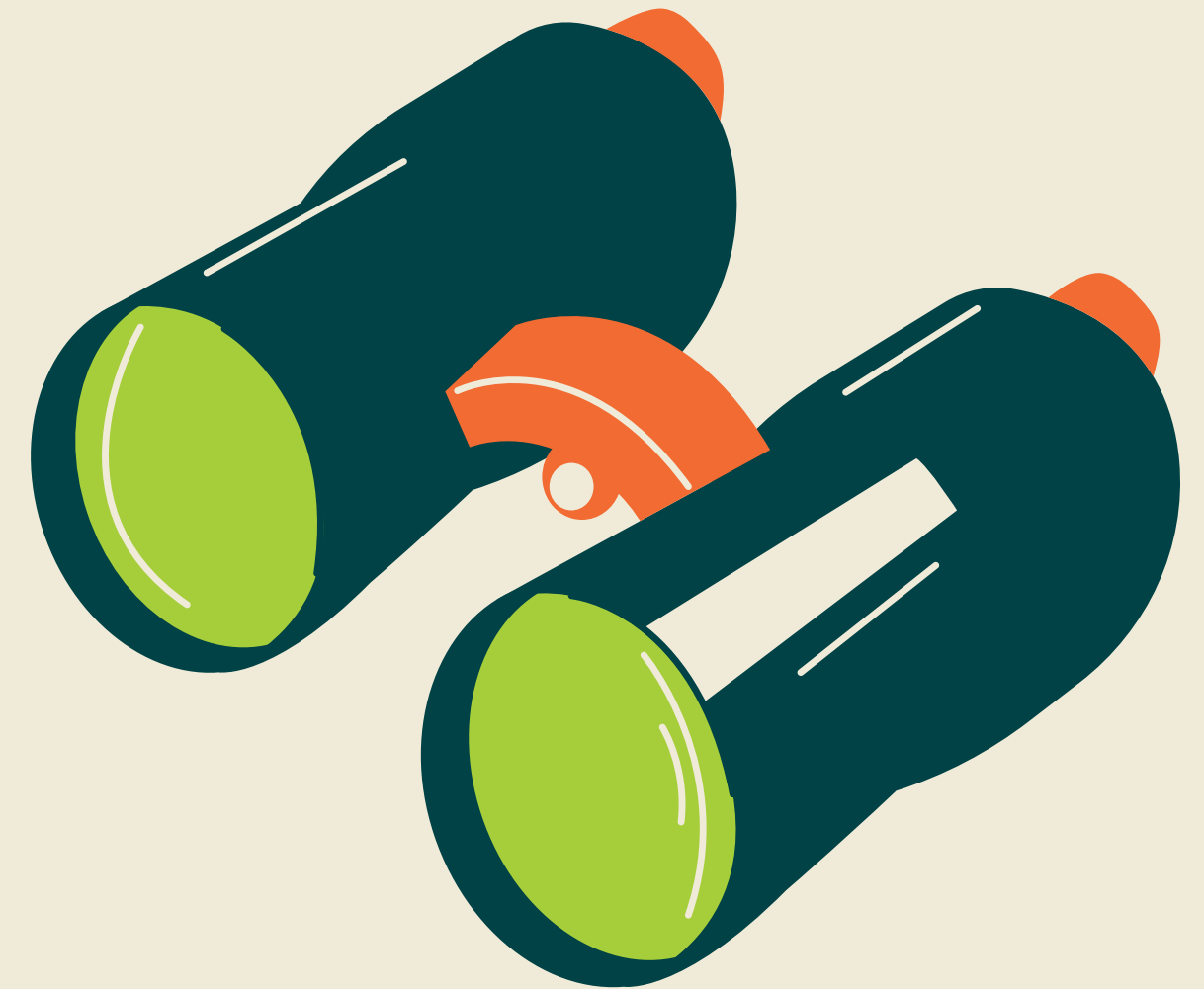
ADDITIONAL INFORMATION

- Some programs may require a **non-refundable deposit**:
 - You are responsible for paying this deposit
 - **SHSU Study Abroad fee is non-refundable**
 - If SHSU receives an invoice that includes the deposit, the deposit amount will be credited toward your student account balance
- **It is your responsibility to check your email, Bearkats Abroad Portal and additional application portals be up to date with your application(s)**



TRANSFER OF CREDIT PROCESS (EXCHANGE & AFFILIATED/NON-AFFILIATED PROGRAMS)

- All students must complete the Course Pre-Approval Form
 - It requires a signature from your academic advisor &/or department chair
 - The form is available on your Bearkat Abroad Portal after you're approved
- Courses may count toward:
 - Major requirements
 - Minor requirements
 - Elective credit



TRANSFER OF CREDIT PROCESS (EXCHANGE & AFFILIATED/NON-AFFILIATED PROGRAMS)

- To have courses count toward your major or minor:
 - You must consult your academic advisor &/or department chair
 - Departments may have limits on how many courses can transfer back
 - Bring syllabi and course descriptions when meeting with them



TRANSFER OF CREDIT PROCESS (EXCHANGE & AFFILIATED/NON-AFFILIATED PROGRAMS)

- Make sure your program's official transcript is sent to the Office of Study Abroad (studyabroad@shsu.edu)
- Courses will transfer only after:
 - SHSU receives your completed Course Pre-Approval Form and official transcript from your host institution



NEXT STEPS

- Talk to your academic advisor(s) and department chair(s) about your study abroad plans and how they may affect your graduation progress
- Review the study abroad process on the Office of Study Abroad website
- Research programs that interest you through the [Bearkats Abroad Portal](#) or [SHSU Study Abroad Programs](#)
- Begin applying directly to the programs, and start your Bearkats Abroad Portal application for your #1 choice program

